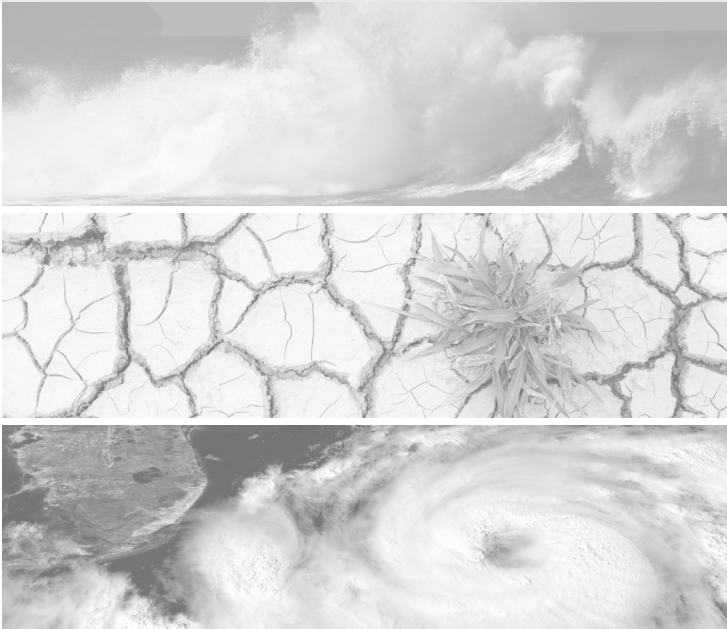


# Creating Resilient Water Utilities Initiative



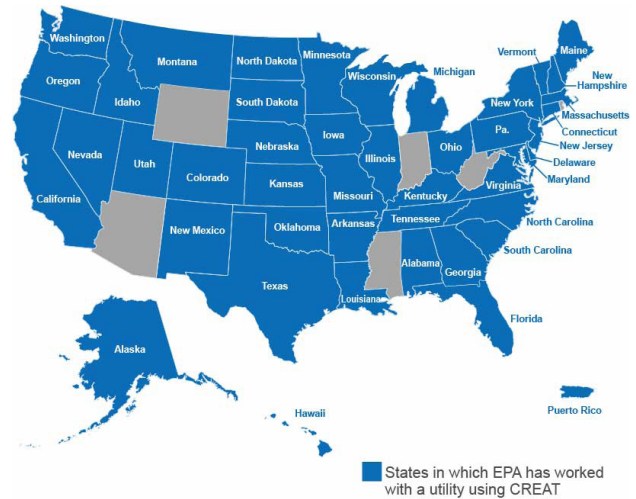
The U.S. Environmental Protection Agency's [Creating Resilient Water Utilities](#) (CRWU) initiative provides drinking water, wastewater, and stormwater utilities with the practical tools, training, and technical assistance needed to increase resilience to current and future climate conditions.

Through a comprehensive planning process utilizing integrated resources, CRWU assists water sector utilities by promoting a clear understanding of climate science and potential long-term adaptation options.



EPA has provided direct technical assistance to drinking water and wastewater utilities across the country by helping to conduct climate change risk assessments using CREAT.

To learn more about how these utilities used CREAT to develop adaptation plans and encourage resilience planning in their communities, watch the [CRWU Adaption Planning in Action](#) video series or visit our [Adaptation Case Studies for Water Utilities](#) map.



Many opportunities exist for water sector utilities to address climate impact challenges while simultaneously meeting the needs of growing communities, sensitive ecosystems, farmers, ranchers, energy producers, and manufacturers.

In some areas, increased stormwater runoff, flooding, or sea-level rise can impact water quality and utility infrastructure. CRWU tools and resources can help to identify adaptation strategies that will protect infrastructure and operations, allowing utilities to provide reliable and sustainable service to their customers. See the other side of this document for information on all CRWU tools and resources.

# CRWU Tools and Resources

## Training and Engagement Center

Learn more about CRWU's tools and resources from past webinars and workshops. Hear from utilities about how they used CREAT to strengthen their climate resilience.



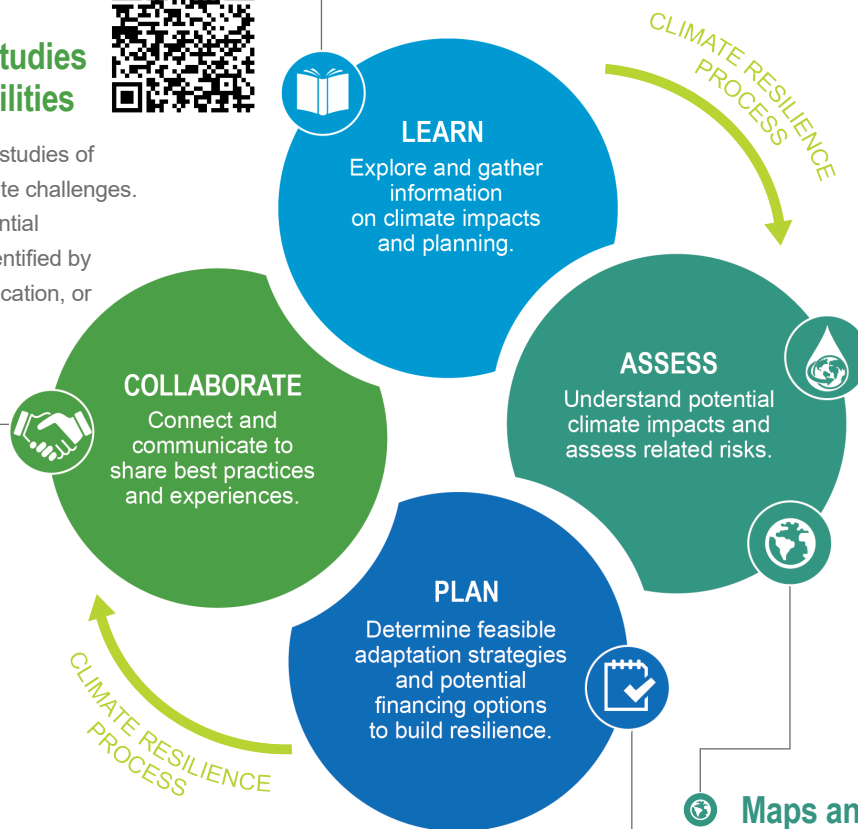
## Climate Resilience Evaluation and Awareness Tool (CREAT)

Assess potential climate impacts and related risks. The tool guides users through a climate threat identification process and the design of adaptation plans based on their selected threats. CREAT features a series of five modules, a user-friendly interface, climate data projections, and monetized risk results. CREAT also has import capacity and integrates with other EPA tools such as the Vulnerability Self-Assessment Tool (VSAT) and Resilient Strategies Guide.



## Adaption Case Studies Map for Water Utilities

Explore real-world case studies of utilities addressing climate challenges. Review and submit potential adaptation strategies identified by utilities of similar type, location, or climate challenge.



## Resilient Strategies Guide



Consider planning priorities, resilience building, and customized information based on the experiences of other utilities and best available science. Once strategies are identified, the Guide links to financial resources from EPA's Water Finance Clearinghouse, provides a report, and can generate a file for use in the Climate Resilience Evaluation and Awareness Tool.

## Maps and Data Services

Review climate model projections and natural hazard data, including:

- Average Temperatures and Extreme Heat
- Average Precipitation and Storm Intensity
- Coastal Flooding and Sea Level Rise
- Storm Surge Flooding and Hurricane Strike Frequencies
- Streamflow Dynamics for Supply and Discharge Planning

